

AUTROVOICE MULTIVES POWER SUPPLY MANAGER

Voice alarm system

Product Datasheet

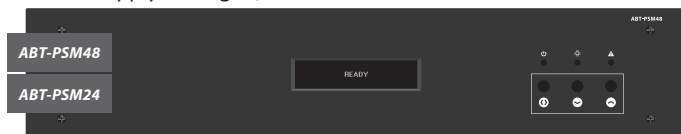
ABT-PSM48 / PSM24

EN 54-4

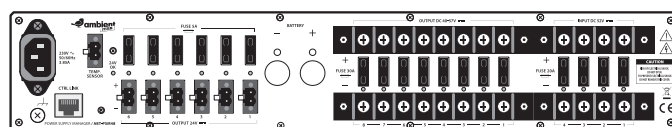
ABT-PS48800 / PS24500 / PF4

EN 12101-10

Power Supply Manager / Front



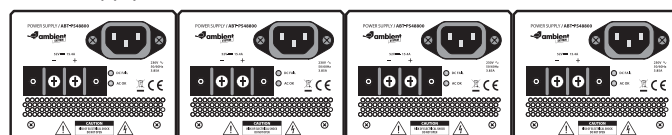
Power Supply Manager / Back



Power Frame / Front



Power Supply Units / Back



ABT-PSM48/24 Power Supply Manager is designed for distribution of DC Power Supply from Power Supply Units (PSU) and a back-up battery. The unit controls battery charging and distributes power supply to all Voice Evacuation System (VES) equipment at max 60 A. When the system uses battery back-up, the power supplied is 3.2 kW (48 V) and 1.6 kW (24 V). The unit complies with the EN 54-4 VES standards and also EN 12101-10 Smoke and Heat Control System standards.

As a main source of energy distribution, the manager uses

external modules 800 W (ABT-PS48800) for 48 V and 500 W (ABT-PS24500) for 24 V. PSM48 power supply manager uses internal power converter for 24 V equipment. As a source of stand-by power supply it uses the battery bank of the capacity of up to 200 Ah.

ABT-PSM48/24 cooperates with the 4x12 V / 2x12 V VRLA battery bank. It maintains the bank in charged condition, ensures temperature compensation of charging parameters and monitors serial resistance of the battery and its wiring as specified in Exhibit No. A2 to the EN 54-4 Standard.

ABT-PSM48/24 co-operates with up to 4 modules of ABT-PS4880/PS2450 Power Supply Units. The manager ensures safe connection for the purpose of parallel operations and monitors the output parameters of each power supply unit.

ABT-PS48800/PS24500 is designed for assembling in a dedicated ABT-PF4 Power Supply Unit Frame. The elements of the system are designed for assembling in a Rack 19" IP30-type.



1488-CPR-0620/W



Technical specifications	ABT-PSM48	ABT-PSM24
Maximum configuration	1x ABT-PSM48/PSM24: Power Supply Manager ABT-PS4880/PS2450: Power Supply Unit 1xABT-PF4 - Power Supply Units Frame	
AC power supply	230 VAC + 10%-15%; 50/60 Hz	
Max nominal power consumption	885 W / 3.85 A	590 W / 2.6 A
Efficiency at rated power	> 90%	> 85%
DC input	4 ; bolted terminals; dedicated power supply unit (ABT-PS48800/PS24500)	
DC input protection	4 x 20 A 80 Volt DC	
DC outputs	8x 48 V, each output max. 30 A 6x 24 V, each output max. 5 A (total for all outs 6,25 A)	6x 24 V; each output max. 5 A
Summary maximum DC output load (24 V and 52 V)	3200 W	1600 W
Battery (type)	4 pieces, VRLA 12 V 15-200 Ah max. 8 mΩ	2 pieces, VRLA 12 V 15-200 Ah max. 8 mΩ
Charging current	max. 14 A	
Charging voltage	54,6 V ± 0,6 V (at 25°C)	27,3 V ± 0,3 V (at 25°C)
Maximum resistance of wiring and fuses	10 mΩ	
Maximum total serial resistance of wiring, fuses, and batteries	28 – 100 mΩ	18 – 54 mΩ
Operating temperature	-5°C up +40°C	
Dimensions	482 (W) x 85 (H) x 443 (D)	
Weight	7.2 kg	
Technical specifications	ABT-PS48800	ABT-PS24500
AC power supply	230 VAC +10% -15%, 50/60Hz, 3.85 A Wire with IEC 60320 C13 3x0,75 mm ² coupling (supplied with the unit)	
Maximum power consumption	885 W / 3.85 A	590 W / 2.6 A
Efficiency at rated power	> 90%	> 85%
AC input protection	T6.3 A/250 V 5x20mm slow-blow fuse (accessed when the casing is open)	
Protection from electric shock	Class I (EN 60065)	
DC output	52 VDC; max. 15.4 A	26 VDC; max. 19.2 A
Dimensions	85 (W) x 95 (H) x 395 (D)	
Weight	2.6 kg	



Product name	Part number	Description
ABT-PSM48	116-ABT-PSM48	Power Supply Manager
ABT-PS48800	116-ABT-PS48800	Power Supply
ABT-PF4	116-ABT-PF4	Power Supply Unit Frame